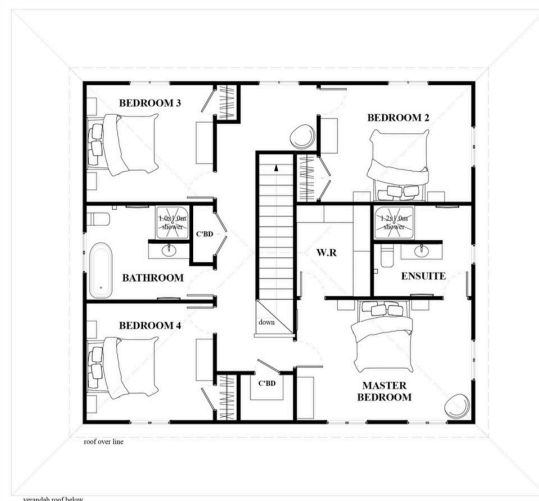
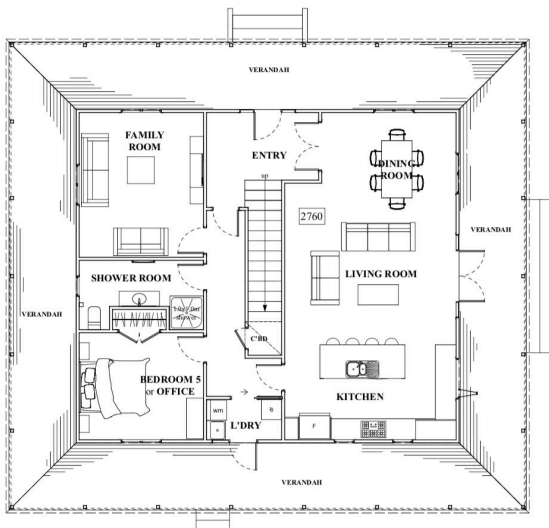


The Kerikeri Design Plan



AREAS:	
Ground Floor	112.86m ²
First Floor	112.86m ²
Total	225.72m²
Verandah Decks	101.20m ²

225m² double story home, 5 Bedroom, 3 Bath, Open Dining, Kitchen and Lounge, Separate laundry, wraparound verandah on the ground level

This traditional missionary styled home is fit for purpose featuring a wraparound verandah. Five double bedrooms, a generous master suite with walk in robe and 3 bathrooms, this home has it all. Including a grand staircase upon entry into the home, and a substantial living area. You will have plenty of room to fit a large family in. The archway windows bring an elegant wow factor to the home embracing the rich heritage look.



The Kerikeri Design Plan



All our designs are completely customisable so if you'd like to widen or lengthen this design, flip it sideways, or change the layout - anything is possible to suit the needs of your family or property.

We are always available to chat through the options with you.

0508 40 30 20 | info@heritagehomesnz | www.heritagehomes.nz | [f](https://www.facebook.com/heritagehomesnz) @heritagehomesnz [i](https://www.instagram.com/heritagehomesnz)

